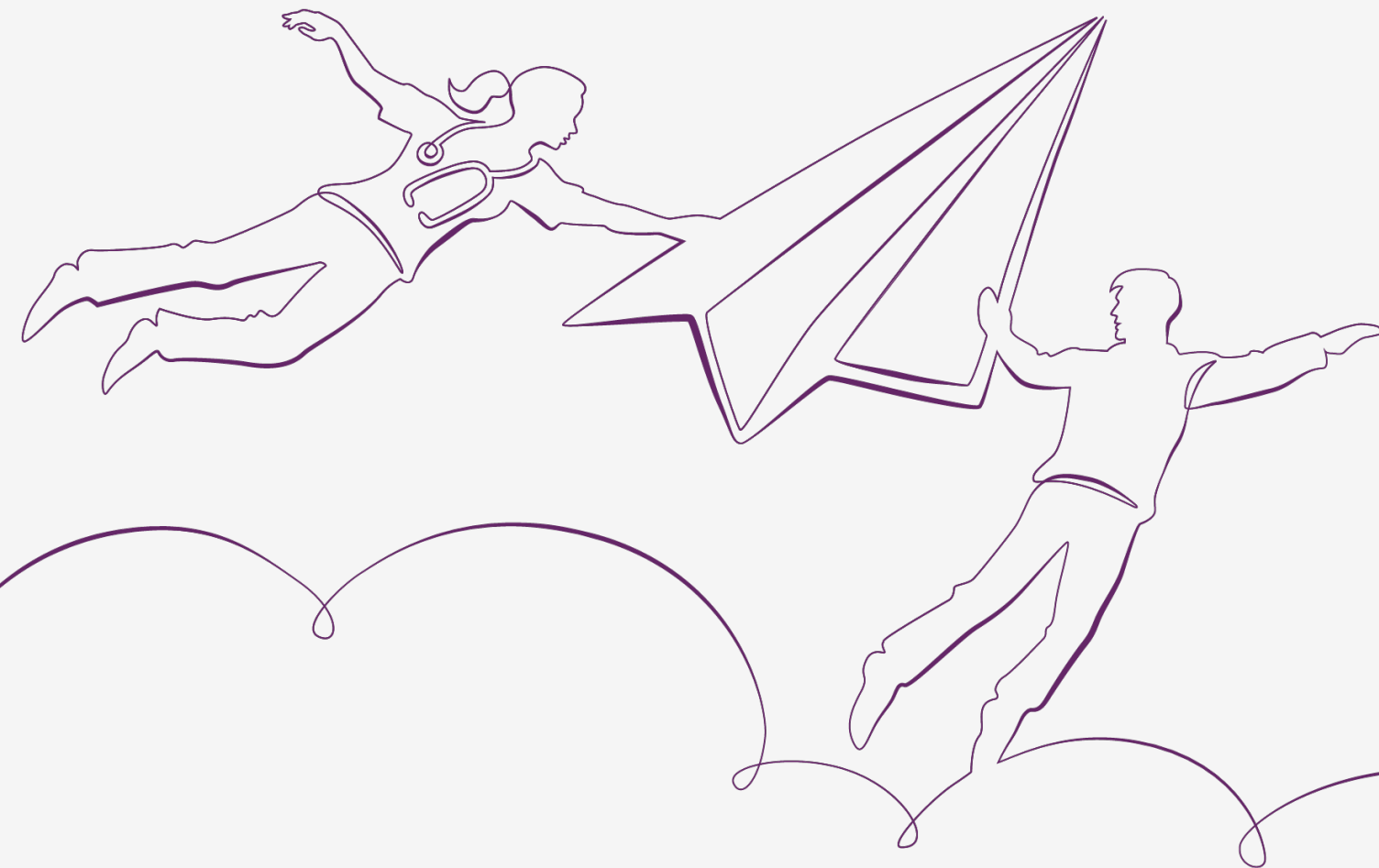


florence Intelligent Health Messaging

Shaping the future
of behavioural change
by design



Powered by  Generated Health

Summary

Bug Fix – Patient Records

- Issue affecting clinicians within multiple teams when displaying patient records.

Bug Fix – Reports

- Fixed formatting of the History download report.
- Patient name and date of birth added to the History PDF download report.
- New message 'Class' column added to Messages report, available to Organisation Admin role.

Enhancements – Bulk Upload

- Functionality to allow upload of natively formatted csv files which can be downloaded directly from the electronic patient record (EPR) system e.g., EMIS and TPP-SystemOne (S1).
- Enhanced Bulk Upload functionality allows the user to select US date formats.
- Selecting a protocol is no longer mandatory, users can select the protocol option 'None' and upload a list of patients with no specific protocol assigned.
- Mobile number is validated when a clinician uploads a csv file.
- Upload process allows for multiple NHS number formats, if applicable (NHS).
- Fix to Bulk Upload functionality to allow shorthand number to process correctly.
- Users can specify the preferred time for bulk upload to be processed by Florence.
- DOB format in bulk upload file allows a date format of dd/mmm/yyyy (e.g., 01/Nov/2000)

Bug Fix - Breadcrumbs

- Fix for how breadcrumbs are displayed to team members.

Bug Fix - Notifications

- Reordering of the team notifications to list notifications in reverse chronological order.

Bug Fix – Patient Overview

- Minor change to the Patient Overview allowing to expand and collapse button on the history panel.

Bug Fix – Patient Record

- Fix for formatting issue of the assign protocol icon.

Bug Fix – Error Formatting

- Colour formatting change for errors, errors now displayed in red.

Enhancement – Patient History

- New filters added to patient history page in 'Show more' section.

Enhancement

- Unique patient identifiers such as NHS Number, CHI Number etc., added to the downloadable History report.

Enhancement – Protocol Details

- "Save and "Leave" buttons added to the Protocol Details page.

Bug Fix – Date Display

- Change for US domain to show date in MM/DD/YYYY format.

Bug Fix – Patient DOB

- Fix to display the correct patient date of birth.

Bug Fix – Template Mandatory Fields

- Change to templates to ensure all mandatory fields are completed.

Bug Fix – 'Stopped' Patients

- Update to patients who have 'stopped' the service to ensure no messages can be sent.

Bug Fix – 'Stopped' Patients

- Update to patients who have 'stopped' the service to ensure no messages can be sent.

Enhancement – Performance Improvements

- General UI performance improvements.

Enhancement – New User Invites

- Update of new-user invite routine for organisation and domain admins.

Enhancement – Template Editing

- Prompt for users to save changes when exiting template management screen.

Bug Fix – Templates

- Minor update to templates using 'Track Readings' to fix reading count value.



Enhancement – Setting 'Day Zero'

- The 'Day Zero' date can be set at additional stages in the protocol assignment process.

Bug Fix – Report Download

- Fix to allow clinicians to download reports from the Graph page

Flo3 Release Notes 1.3.9.7
Expected Release date: 22nd February 2023

Bug fix for bulk upload

- Fix ensures that the correct clinician that used the bulk upload feature displays correctly to the assigned patients.

Bug fix for self-subscribe patients

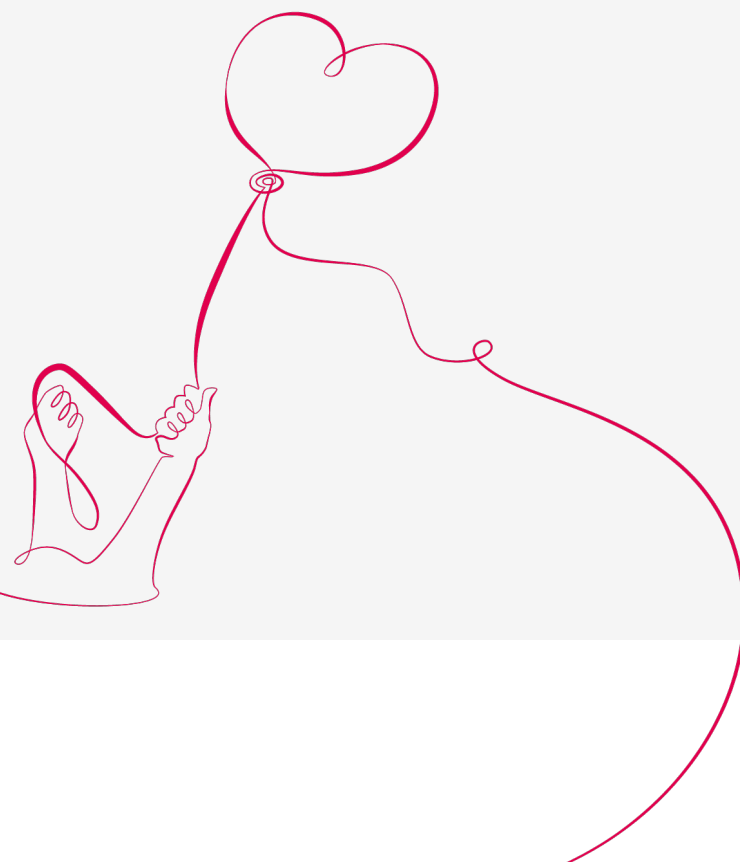
- Bug fix to address the potential risk of the incorrect assignment of patients to a team and self-subscribe protocol when specific criteria are met.
- A priority fix, although likelihood of incident is extremely low.

Bug fix for disabling the self-subscribe feature

- When users untick the "Self-subscribing team" tick box within the team details, the self-subscribe functionality remained active and patients were still able to self-subscribe.
- This has been changed to ensure it is disabled appropriately.

Hide application password credentials for EMIS interoperability

- The password field for interoperability with EMIS was previously visible to a Florence team admin.
- This is now a hidden field to protect security.




Thank you!

Any questions?

Shaping the future of behavioural change by design



florence Intelligent Health Messaging

Powered by  Generated Health

Mercury House,
117 Waterloo Road, London SE1 8UL

Generated Health, Harpswell,
Maine, 04079, USA